

# **ECOBRIGHT**

## **SMART BATTEN**



### **Description**

The EcoBright Smart Batten is designed to deliver efficient and uniform illumination for a wide range of indoor environments. It is available in a 40W option with a luminous efficacy of 100 lm/W. This supports bright and consistent light output suitable for both residential and commercial settings. A CRI>80 helps maintain natural and accurate color rendering across all illuminated areas. The batten is equipped with 2.5 kV surge protection, which helps in maintaining stable operation during electrical variations. It carries an IP20 rating for indoor use and a PF>0.5 that enhances electrical efficiency. It offers a lifespan of 25,000 hours@L70. This contributes to long-term performance and reduced maintenance needs.

### **Product Benefits**

- Up to 70% Savings in Energy Cost
- Good Heat Dissipation
- High Luminous Efficacy
- Low Maintenance Cost

### **Application Areas**

- Residential / Offices
- Educational Institutions
- Retail
- Hospitals

### **Product Data**

#### **General Information**

|                  |                    |
|------------------|--------------------|
| Driver Included: | Yes                |
| Lifespan:        | 25,000 hours @ L70 |
| Warranty:        | 1 Year             |

#### **Luminaire Performance**

|                               |                     |
|-------------------------------|---------------------|
| Power Consumption:            | 40W                 |
| Luminous Flux:                | 4000 lm             |
| Luminous Efficacy (rated):    | 100 lm/W            |
| Correlated Color Temperature: | 3000K, 4000K, 6500K |
| Color Rendering Index (CRI):  | >80                 |
| Beam Angle:                   | 120°                |

#### **Operating and Electrical**

|                          |             |
|--------------------------|-------------|
| Input Voltage:           | AC85-265V   |
| Line Frequency:          | 50 or 60 Hz |
| Power Factor (Fraction): | >0.5        |
| SPD:                     | 2.5kV       |

#### **Temperature**

|                        |              |
|------------------------|--------------|
| Operating Temperature: | -20°C – 45°C |
|------------------------|--------------|

#### **Controls and Dimming**

|           |        |
|-----------|--------|
| Controls: | On/Off |
|-----------|--------|



**Mechanical and Housing**

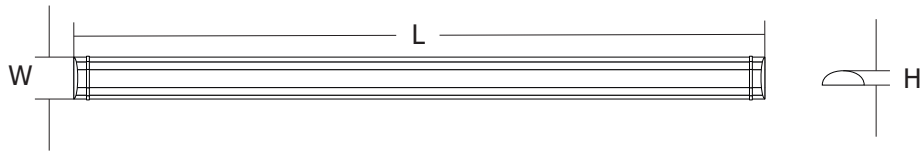
|                         |                 |
|-------------------------|-----------------|
| Housing Material:       | PC              |
| Optical Cover Material: | PC              |
| Installation:           | Surface Mounted |

**Compliance and Certifications**

|                          |                 |
|--------------------------|-----------------|
| Ingress Protection Code: | IP20            |
| Impact Protection Code:  | IK02            |
| Protection Class IEC:    | Safety Class II |

**Dimensions**

|                    |            |
|--------------------|------------|
| Power Consumption: | 40W        |
| LxWxH (mm):        | 1200x75x30 |

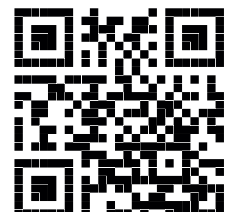


**Head Office:**

192-Y Block, Commercial Area, Phase III, DHA Lahore, Pakistan.

**Sales Office:**

120-Y Block, Commercial Area, Phase III, DHA Lahore, Pakistan.



MRK/PM/PS/EBS/25/01